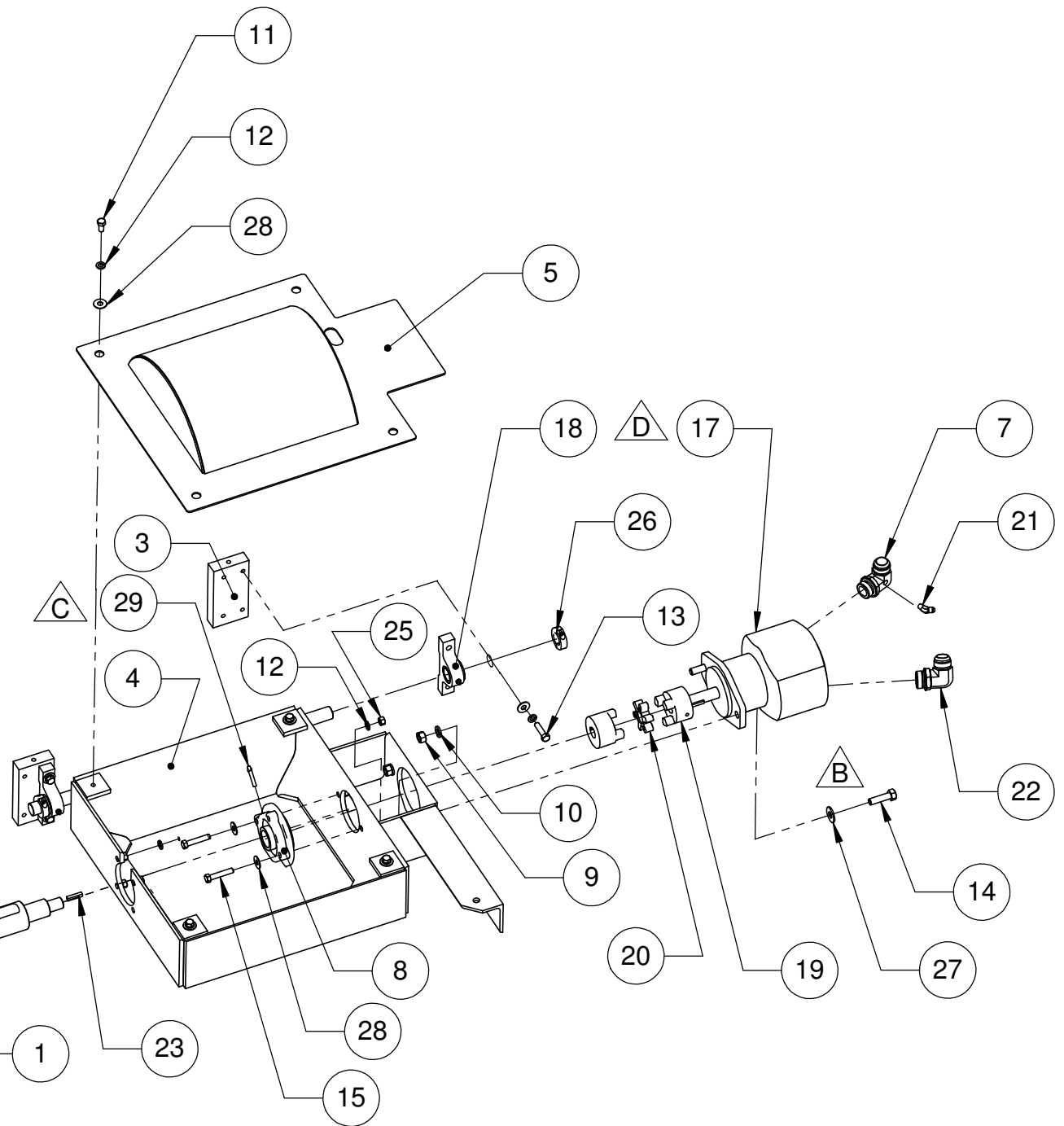
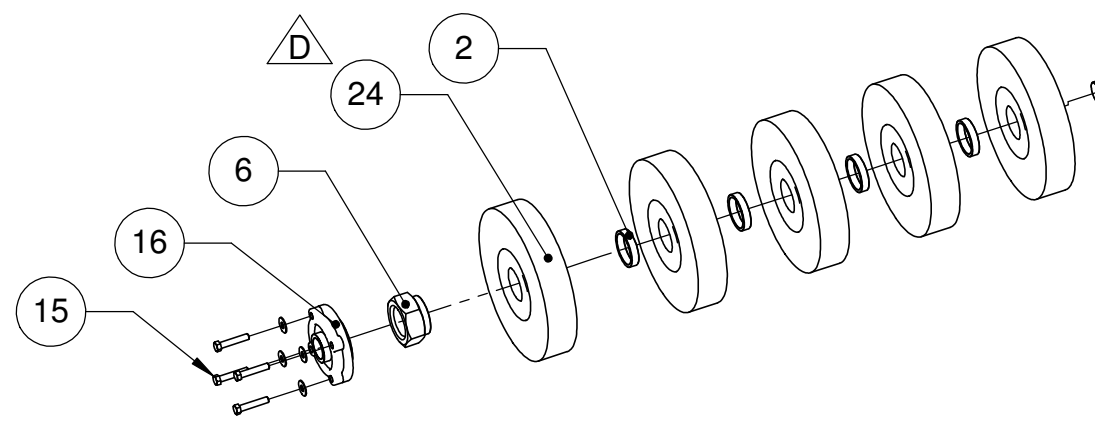


ITEM NO.	PART NUMBER	DESCRIPTION	QTY
1	13909	BRUSH SHAFT	1
2	13915	BRUSH SPACER	4
3	13570	BEARING MOUNT	2
4	16016	BRUSH HOUSING MACHINE WORK	1
5	13651	BRUSH HOUSING COVER	1
6	14680	BRUSH SHAFT NUT	1
7	15742	MODIFIED FITTING	1
8	14589	CUT BRUSH SHAFT BEARING	1
9	14124	NUT, HEX, .5" NC	2
10	14140	WASHER, LOCK, .50"	2
11	14144	HHCS, .375" x .75" NC	4
12	14145	WASHER, LOCK, .375"	14
13	14307	BOLT, HHCS, .375" X 1.50" NC GR5	4
14	14311	BOLT, HHCS, .50" X 1.75" NC GR5	2
15	14321	BOLT, HHCS, .375" X 2" NC GR5	6
16	14588	BRUSH SHAFT BEARING	1
17	49830	BRUSH MOTOR, GEARTEK	1
18	117-701-915-00	BRUSH HOUSING BUSHING BLOCK	2
19	15012	SPIDER COUPLING	2
20	15027	SPIDER	1
21	15580	ELBOW	1
22	15595	ELBOW	1
23	16298	KEY	2
24	48129	WIRE WHEEL 10", HUB CITY IRON WORKS	5
25	16487	NUT, HEX, .375" NC	6
26	16772	SPLIT COLLAR	2
27	17649	WASHER, FLAT, .50"	2
28	17656	WASHER, FLAT, .375"	14
29	46163	GREASE FITG	1



ECN	REV	DESCRIPTION	DRAWN	CHECKED	DATE	UNLESS OTHERWISE STATED	TOLERANCE UNLESS OTHERWISE SPECIFIED	MIE SUPPLY		PROPRIETARY AND CONFIDENTIAL	
-	A	RELEASED FOR MANUFACTURING	PWF	JBB	12/19/11	- ALL SHARP EDGES TO BE GROUND R0.125" - ALL WELDS IN ACCORDANCE WITH AWS D1.1 and KWS-001 - MARK/STAMP PT. # AND/OR W.O. # ON PARTS - $\phi \pm 0.063$	X" $\pm .5"$ X.X" $\pm .25"$ X.XX" $\pm .125"$ X.XXX" $\pm .063"$ X.XXXX" $\pm .010"$ X° $\pm 1°$	BY: PWF	DATE: 05/09/11	THE INFORMATION CONTAINED IN THIS DRAWING IS THE SOLE PROPERTY OF MIE SUPPLY. ANY REPRODUCTION IN PART OR AS A WHOLE WITHOUT THE WRITTEN PERMISSION OF MIE SUPPLY IS PROHIBITED.	
	B					MATERIAL N/A		DRAWN: PWF	05/09/11	TITLE: EXTERNAL BRUSHING ASSEMBLY	
	C					COATING N/A	3rd ANGLE PROJECTION	CHECKED: JBB	12/19/11	DWG. No:	REV.: D
	D					DO NOT SCALE ALL DIMENSION IN INCHES		APPROVED: JBB	02/23/17	107-701-007-00	
	E									SAP. No:	WT: LBS SHEET 1 OF 1

001-101-005 REV A C:\00ENGRVAULT\Products\107 - Pipe Cleaning Machine\701 - Mechanical Sub Assemblies\ 5 4 3 2 1