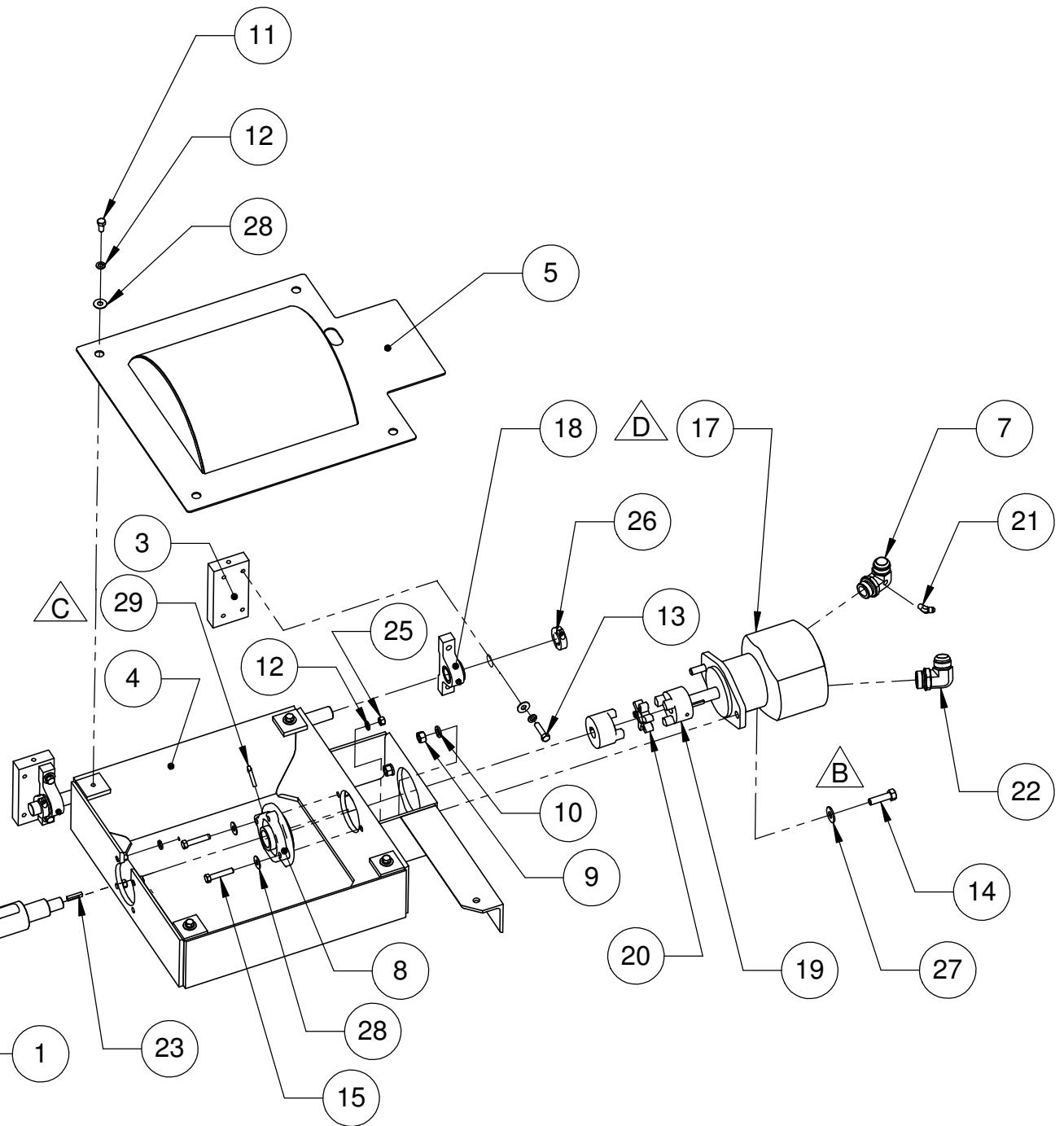
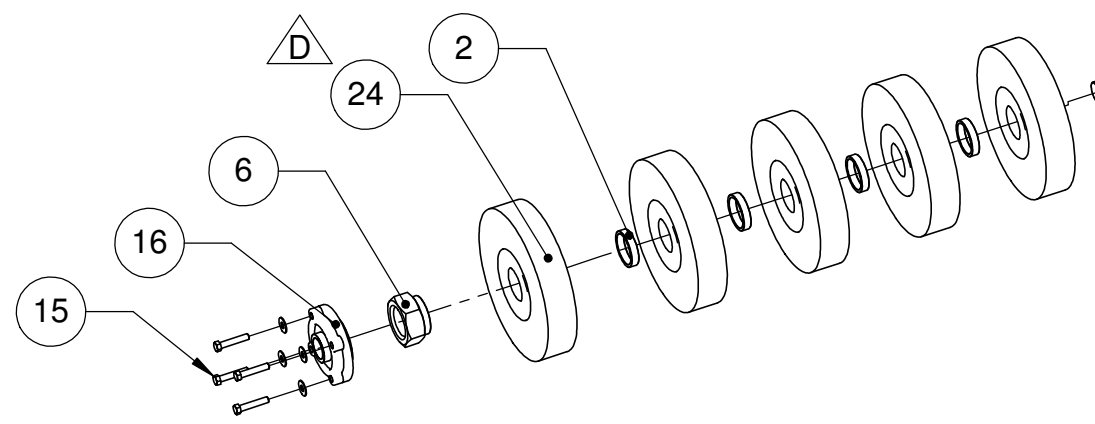


| ITEM NO. | PART NUMBER | DESCRIPTION | QTY |
|----------|----------------|-------------------------------------|-----|
| 1 | M13909 | BRUSH SHAFT | 1 |
| 2 | M13915 | BRUSH SPACER | 4 |
| 3 | M13570 | BEARING MOUNT | 2 |
| 4 | M16016 | BRUSH HOUSING MACHINE WORK | 1 |
| 5 | M13651 | BRUSH HOUSING COVER | 1 |
| 6 | M14680 | BRUSH SHAFT NUT | 1 |
| 7 | M15742 | MODIFIED FITTING | 1 |
| 8 | M14589 | CUT BRUSH SHAFT BEARING | 1 |
| 9 | M14124 | NUT, HEX, .5" NC | 2 |
| 10 | M14140 | WASHER, LOCK, .50" | 2 |
| 11 | M14144 | HHCS, .375" x .75" NC | 4 |
| 12 | M14145 | WASHER, LOCK, .375" | 14 |
| 13 | M14307 | BOLT, HHCS, .375" X 1.50" NC GR5 | 4 |
| 14 | M14311 | BOLT, HHCS, .50" X 1.75" NC GR5 | 2 |
| 15 | M14321 | BOLT, HHCS, .375" X 2" NC GR5 | 6 |
| 16 | M14588 | BRUSH SHAFT BEARING | 1 |
| 17 | M49830 | BRUSH MOTOR, GEARTEK | 1 |
| 18 | 117-701-915-00 | BRUSH HOUSING BUSHING BLOCK | 2 |
| 19 | M15012 | SPIDER COUPLING | 2 |
| 20 | M15027 | SPIDER | 1 |
| 21 | M15580 | ELBOW | 1 |
| 22 | M15595 | ELBOW | 1 |
| 23 | M16298 | KEY | 2 |
| 24 | M48129 | WIRE WHEEL 10", HUB CITY IRON WORKS | 5 |
| 25 | M16487 | NUT, HEX, .375" NC | 6 |
| 26 | M16772 | SPLIT COLLAR | 2 |
| 27 | M17649 | WASHER, FLAT, .50" | 2 |
| 28 | M17656 | WASHER, FLAT, .375" | 14 |
| 29 | M46163 | GREASE FITG | 1 |



| ECN | REV | DESCRIPTION | DRAWN | CHECKED | DATE | UNLESS OTHERWISE STATED | TOLERANCE UNLESS OTHERWISE SPECIFIED | MIE SUPPLY | | PROPRIETARY AND CONFIDENTIAL | |
|-----|-----|----------------------------|-------|---------|------|--|--|------------|----------------|--|----------------|
| - | A | RELEASED FOR MANUFACTURING | | | | - ALL SHARP EDGES TO BE GROUND R0.125" - ALL WELDS IN ACCORDANCE WITH AWS D1.1 and KWS-001 - MARK/STAMP PT. # AND/OR W.O. # ON PARTS - $\phi \pm 0.063$ | X" $\pm .5"$ X.X" $\pm .25"$ X.XX" $\pm .125"$ X.XXX" $\pm .063"$ X.XXXX" $\pm .010"$ X° $\pm 1°$ | | | THE INFORMATION CONTAINED IN THIS DRAWING IS THE SOLE PROPERTY OF MIE SUPPLY. ANY REPRODUCTION IN PART OR AS A WHOLE WITHOUT THE WRITTEN PERMISSION OF MIE SUPPLY IS PROHIBITED. | |
| | B | | | | | MATERIAL N/A | BY: _____ DATE: _____ DRAWN: _____ CHECKED: _____ APPROVED: _____ | | | TITLE: EXTERNAL BRUSHING ASSEMBLY | |
| | C | | | | | COATING N/A | 3rd ANGLE PROJECTION | | DWG. No: _____ | | REV.: D |
| | D | | | | | DO NOT SCALE ALL DIMENSION IN INCHES | | | SAP. No: _____ | WT: _____ LBS | SHEET 1 OF 1 |
| | E | | | | | | | | | | |
| I | H | G | F | E | D | C | B | A | | | |

5
4
3
2
1
Sub Assemblies\